

# CERTIFICATE OF LOCATION OF GOVERNMENT CORNER

County of Anoka

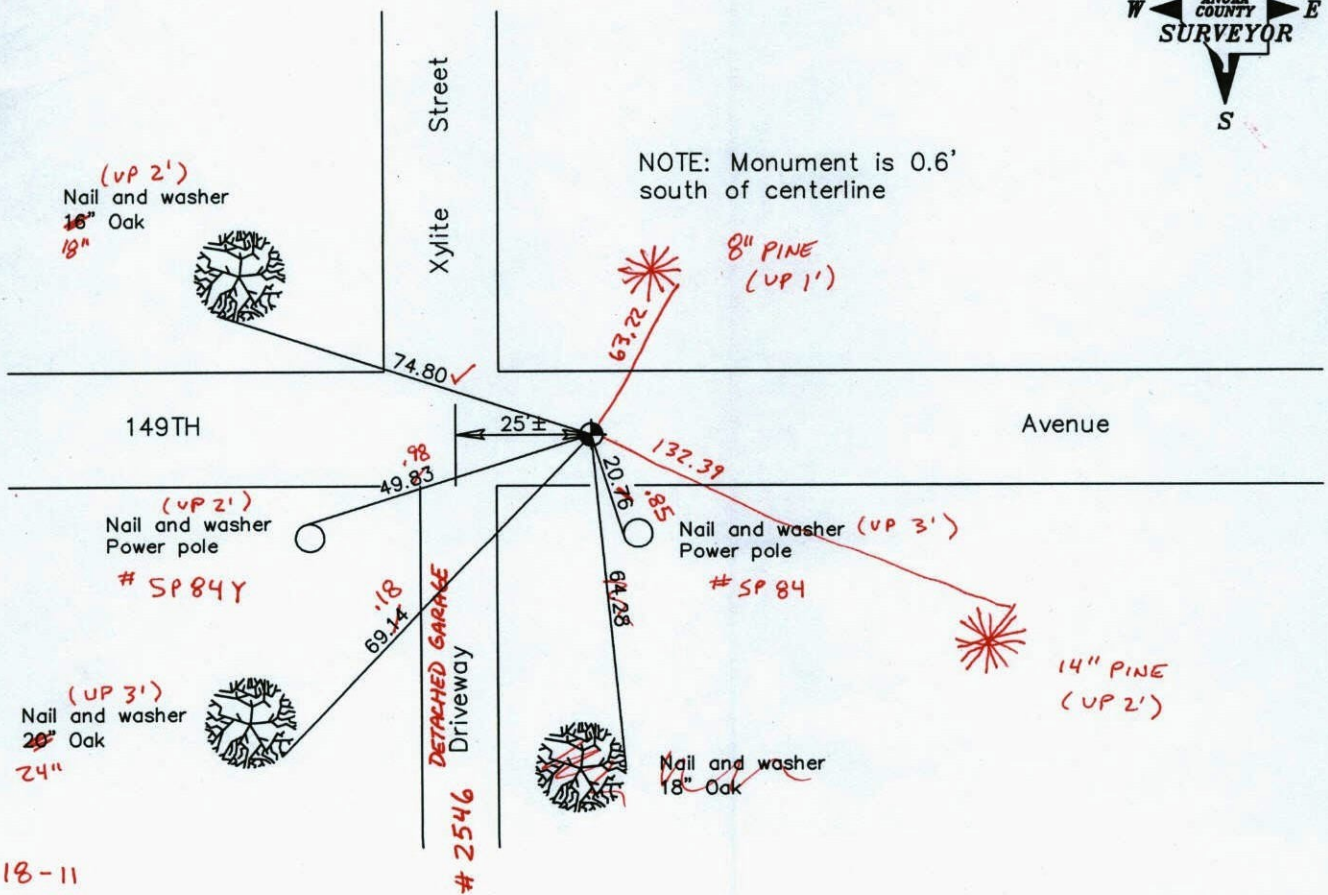
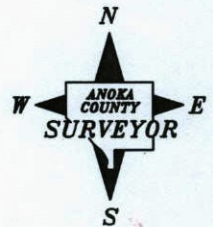
State of Minnesota

Southeast Corner of Sec. 21 Township 32 Range 23

I hereby certify that on the 15th day of September, 1960, I found the described corner which was evidenced by a granite monument

and I further certify that to perpetuate the location of said corner, I did, at the exact location thereof, place a permanent marker consisting of a cast iron monument set in place of a granite monument removed on 7/11/94 after construction

which reference or witness monuments are located in the manner following:



2-18-11  
BK-SS

T/T  
Revised date

8/03/95
7/31/96
11/20/01

N.A.D. 1983 Coordinates  
(1996 adjustment)

County Project Coordinates	State Plane Coordinates
Northing <u>174827.7841</u>	Y _____
Easting <u>516154.6281</u>	X _____

Date 11/20/01



# CERTIFICATE OF LOCATION OF GOVERNMENT CORNER

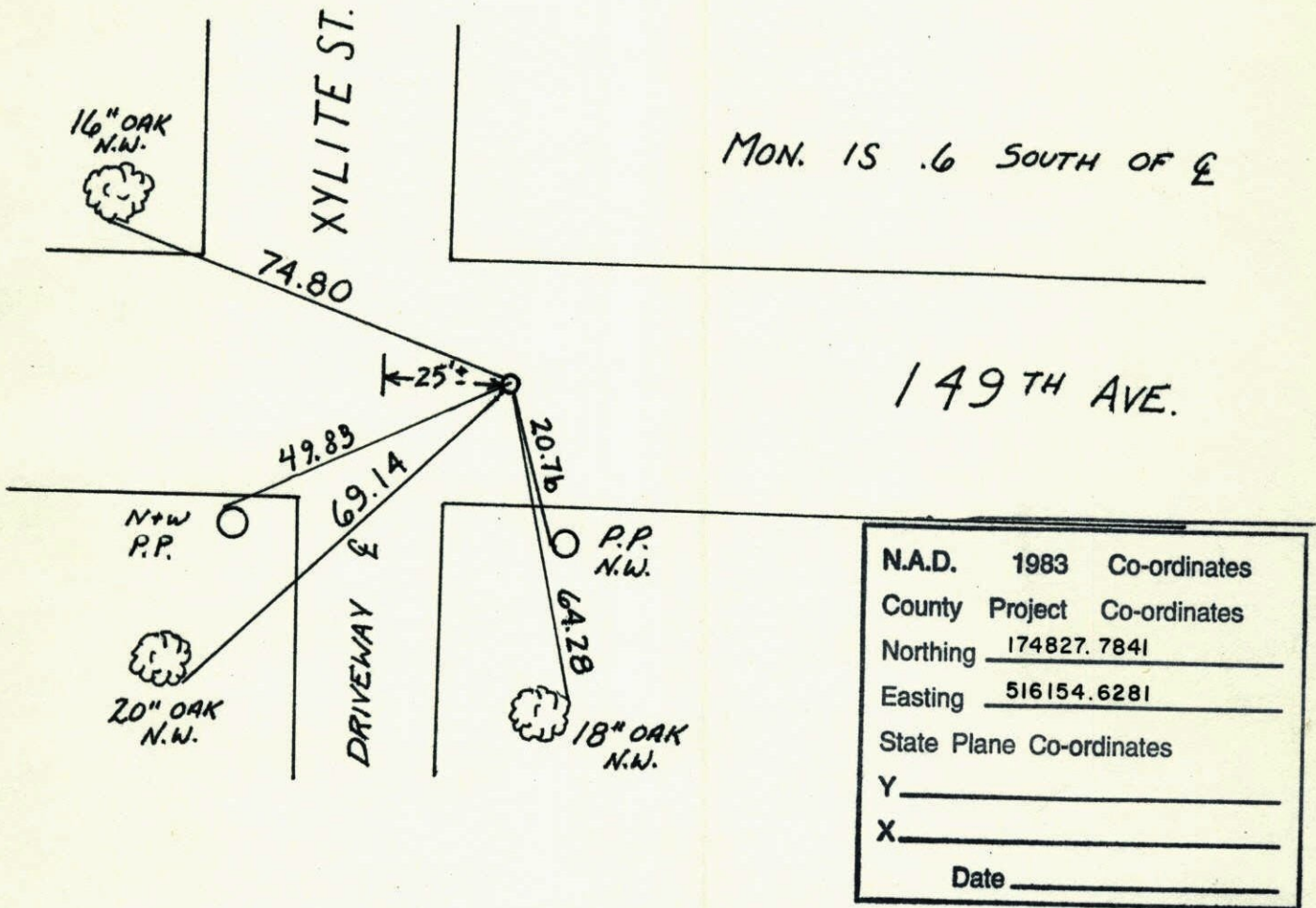
County of Anoka

State of Minnesota

SOUTHEAST Corner of Sec. 21 Township 32 Range 23

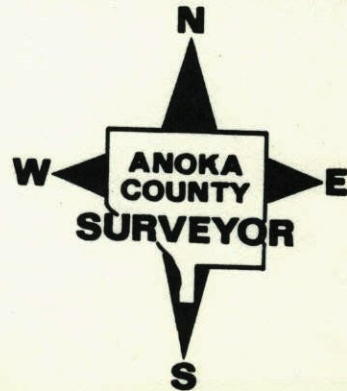
I hereby certify that on the 15 day of SEPT., 1960, I found the described corner which was evidenced by CAST IRON

and I further certify that to perpetuate the location of said corner, I did, at the exact location thereof, place a permanent marker consisting of SET CAST IRON MON. IN PLACE OF GRANITE REMOVED AFTER CONST. 7-11-94 which reference or witness monuments are located in the manner following:



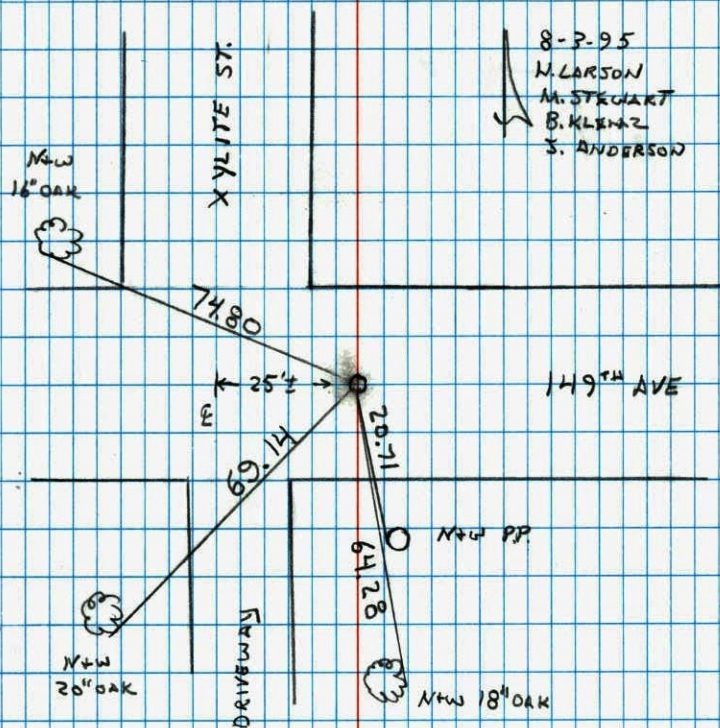
N.A.D.	1983	Co-ordinates
County	Project	Co-ordinates
Northing	<u>174827.7841</u>	
Easting	<u>516154.6281</u>	
State Plane Co-ordinates		
Y	_____	
X	_____	
Date	_____	

Revised date	Revised date	Revised date
<u>12-21-90</u>		
<u>11-25-91</u>		
<u>8-3-95</u>		
<u>7-31-96</u>		





SOUTHEAST CORNER SEC. 21 T32 R23

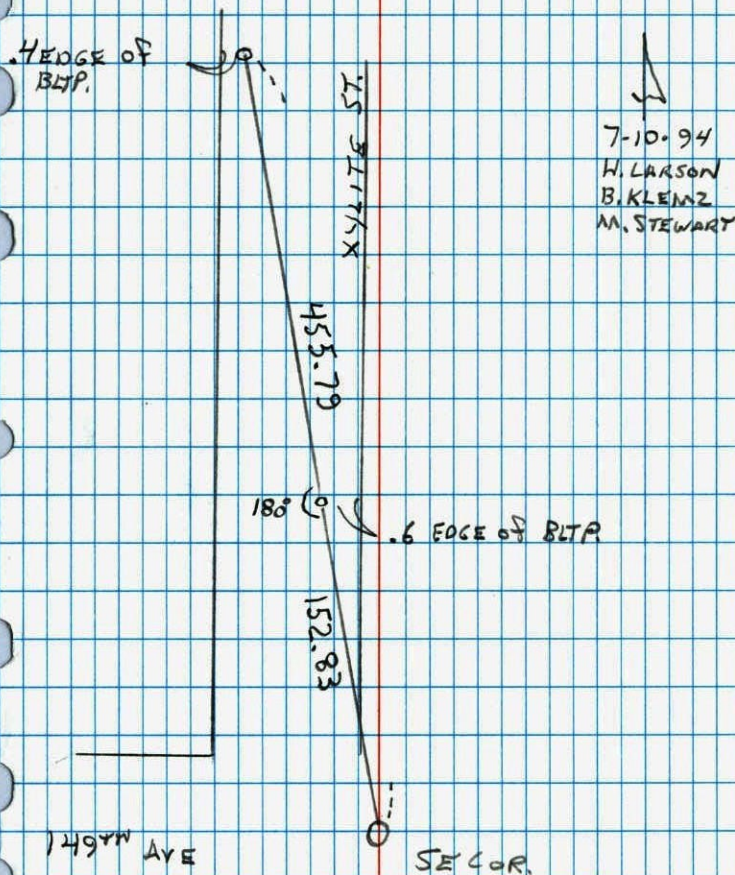
SET CAST IRON MONUMENT IN PLACE OF  
REMOVED GRANITE AFTER ROAD CONST.

NO. 446

NATIONAL FOREST

## CONSTRUCTION TIES

SE CORNER SECTION 21 T32 R23

TRANSIT TIES FOR GRANITE REMOVED  
FOR CONSTRUCTION SET PINS ON LINE

NO. 446

NATIONAL FOREST

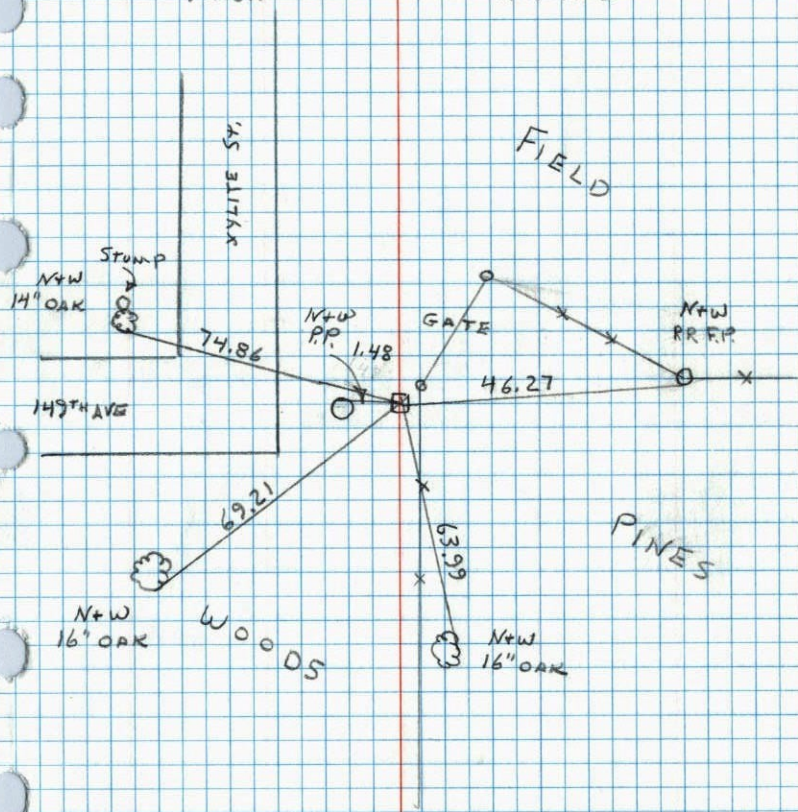


## SE CORNER SECTION 21 T32 R23

CHECKED TIES 11-16-90 W. LARSON

GRANITE FLUSH

B. KLENZ



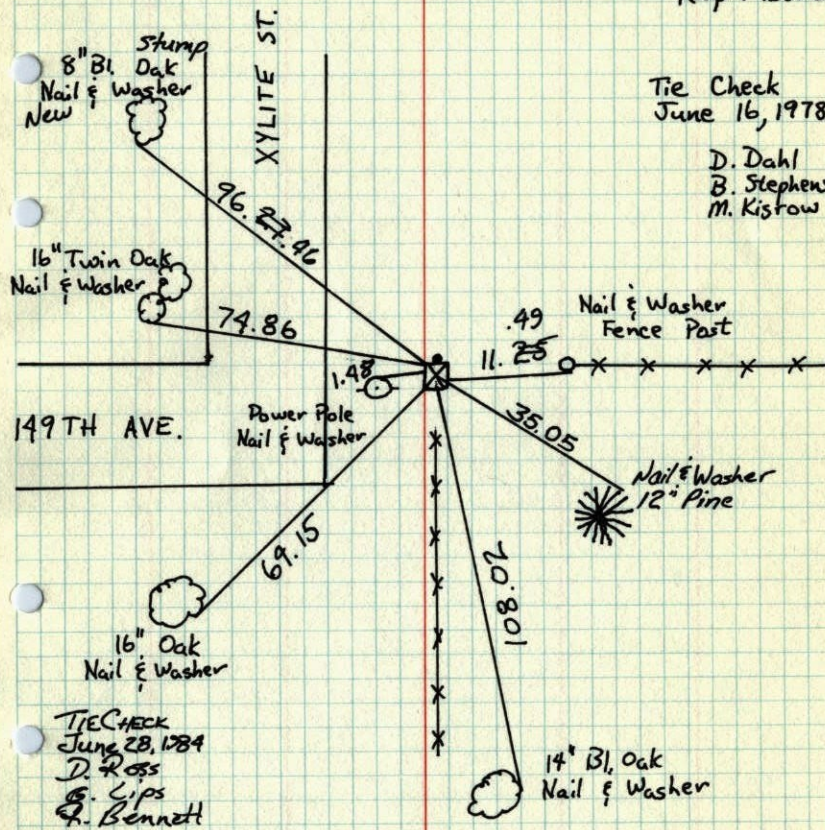
NO. 448

TELEPHONE

## SE CORNER SEC. 21 - T.32, R.23

Found Granite Leaning West 0.44', Straightened  
and Set Granite Mon. Flush.

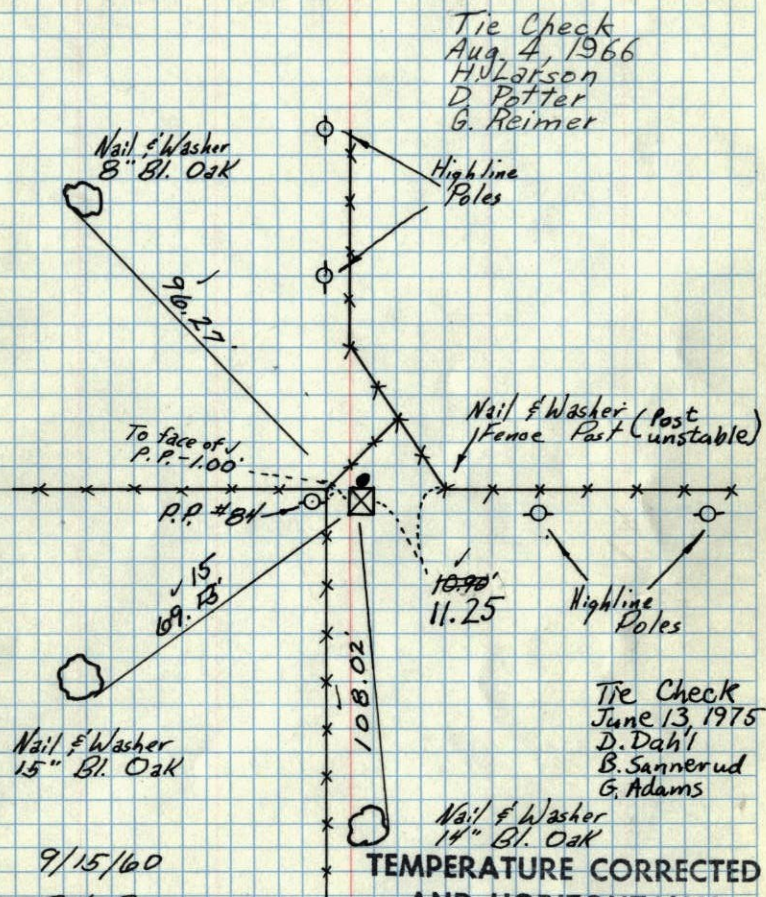
Sept. 15, 1960

Bill Rogers  
Ralph RobinsonTie Check  
June 16, 1978D. Dahl  
B. Stephens  
M. KistowTIE CHECK  
JUNE 28, 1984  
D. ROSS  
G. LIPS  
G. BENNETTTEMPERATURE CORRECTED  
AND HORIZONTALLY  
TAPED MEASUREMENTSROLAND W. ANDERSON,  
COUNTY SURVEYOR  
ANOKA COUNTY, MINNESOTA



SE Cor. Sec 21-T32-R23  
 Found Granite Leaning West 0.44', straightend  
 and Set Granite Mon. flush

SEE NEW TIE BOOK



Tie Check  
 June 13, 1975  
 D. Dahl  
 B. Sannerud  
 G. Adams

TEMPERATURE CORRECTED  
 AND HORIZONTALLY  
 TAPED MEASUREMENTS

ROLAND W. ANDERSON  
 COUNTY SURVEYOR  
 ANOKA COUNTY, MINNESOTA

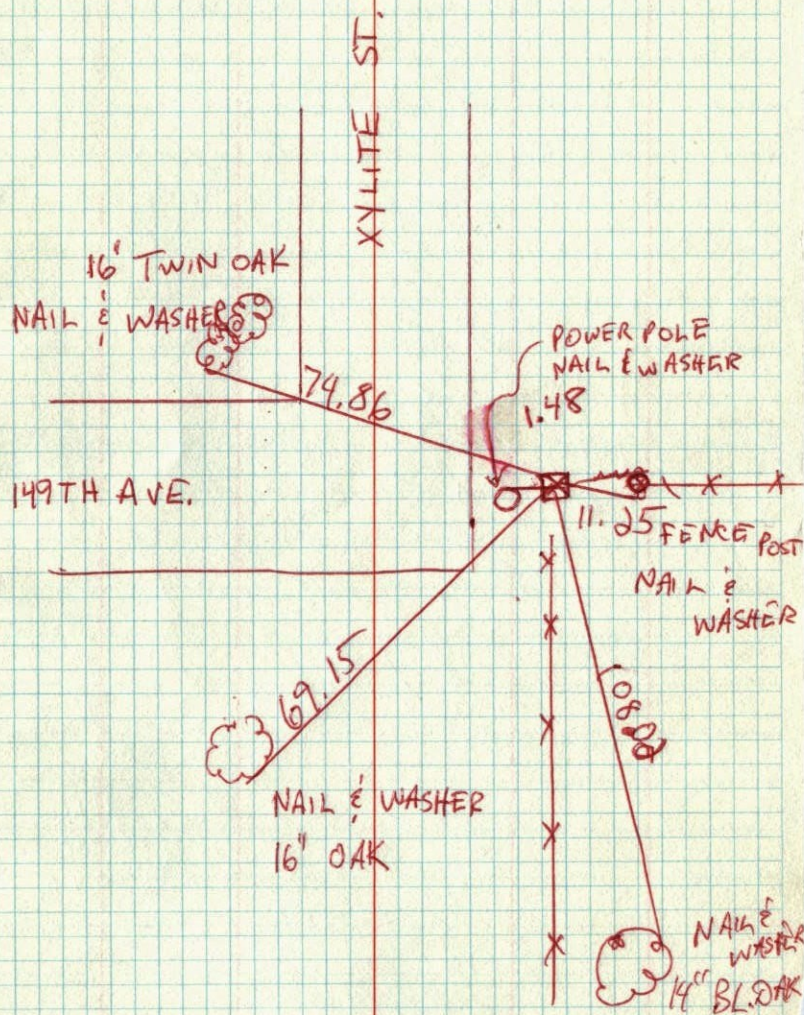
9/15/60

Bill Rogers  
 Ralph Robinson

Retie 7/23/64

M. D. Anderson  
 R. Carlson

SE COR SEC 21-T32-R23





SE Cor. Sec 21 - T32-R23

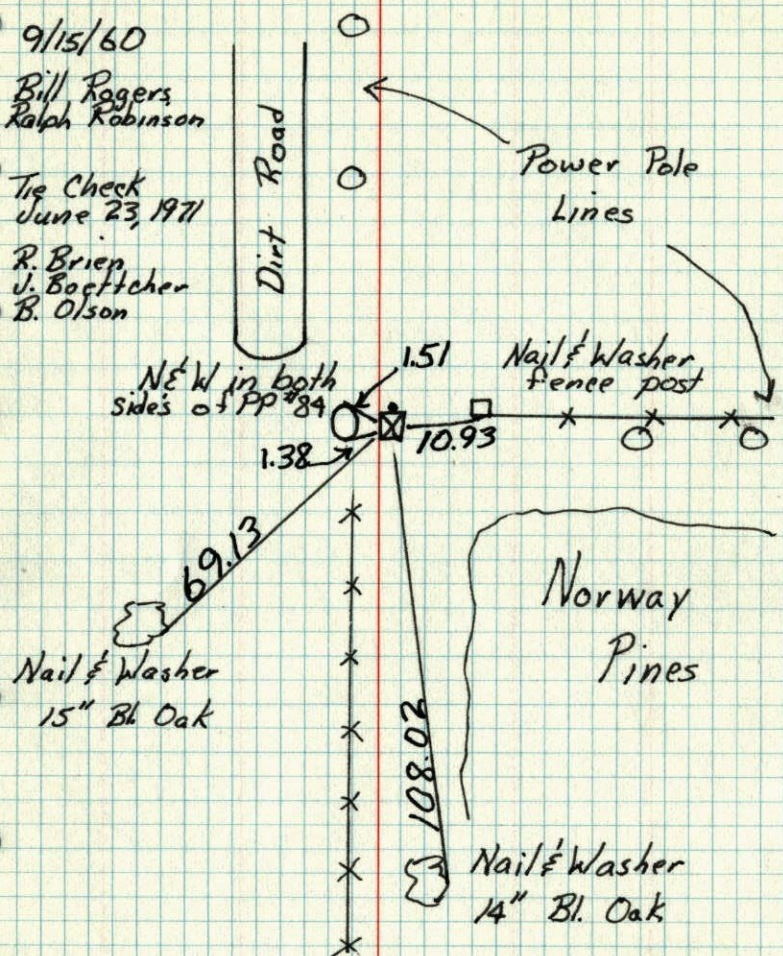
Granite Monument flush.

9/15/60

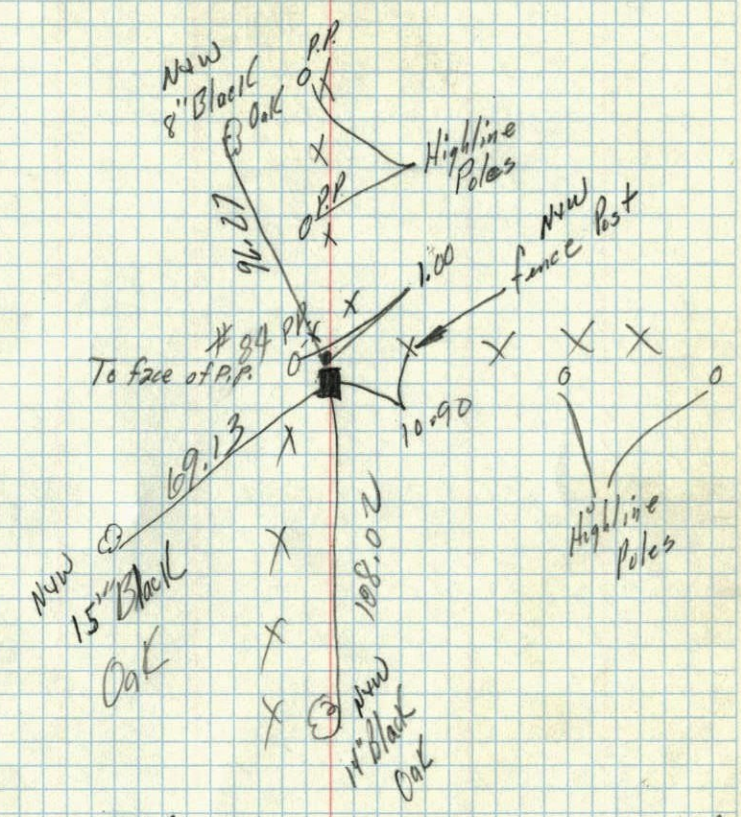
Bill Rogers  
Ralph Robinson

Tie Check  
June 23, 1971

R. Briep  
J. Baettcher  
B. Olson



SE Cor. Sec 21 T32 R23  
Found Granite leaning west by 0.44', straightened  
and set Granite Stone flush.



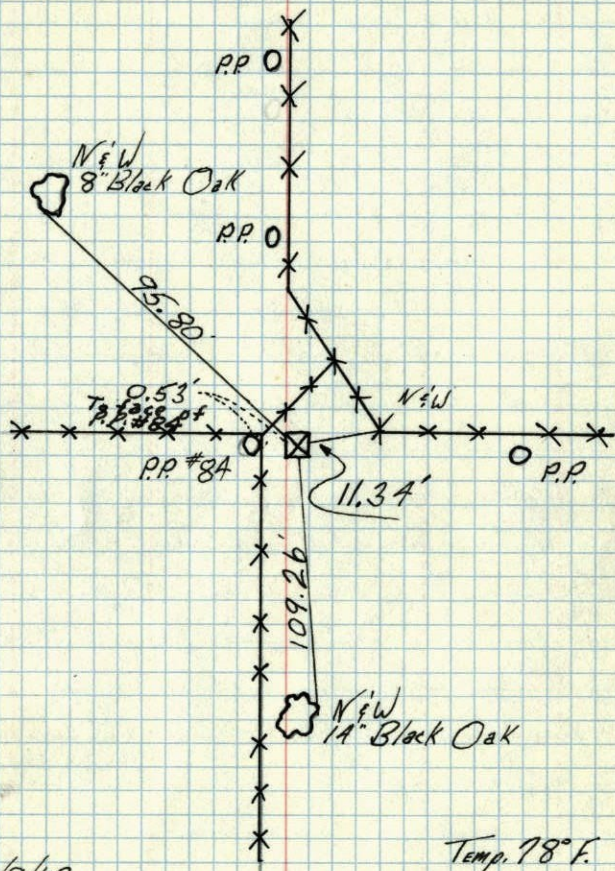
19/16/60

Temp 72°  
9/15/60  
Bill Rogers  
Ralph Robinson



SE. Cor. Sec. 21 T.32 R.23

Grainite  $\uparrow$  8"  
Leaning Towards the West



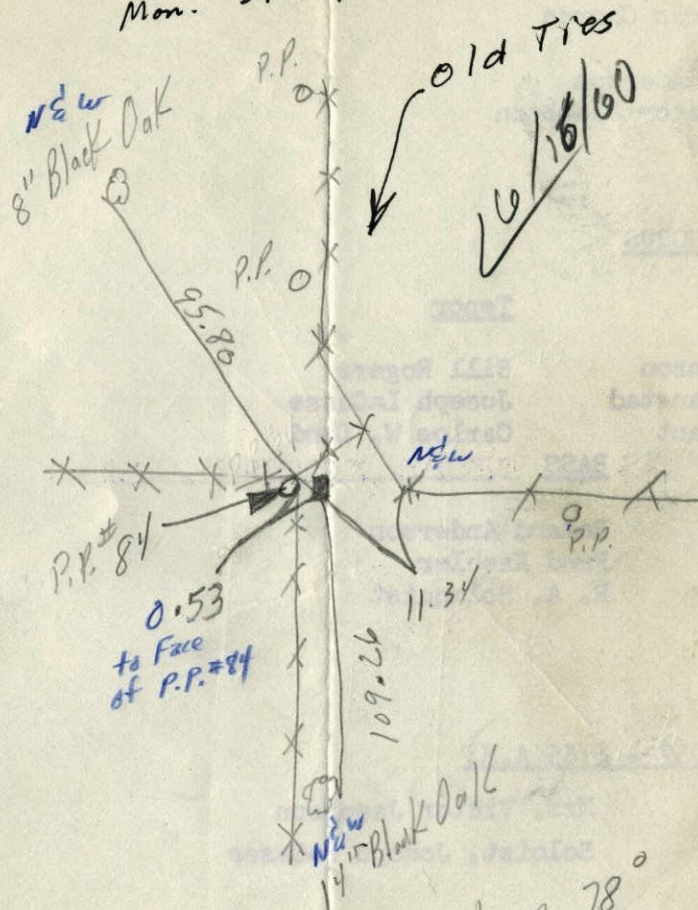
6/9/60

Bill Rogers  
Ralph Robinson

ROLAND W. ANDERSON  
COUNTY SURVEYOR  
ANOKA COUNTY, MINNESOTA

6/9/60 SE Cor. Sec. 21 T32 R23  
Grainite  $\uparrow$  8" & Leaning  
towards the West

Mon. straightened



Temp. 78°

Bill & Ralph